

skinade 

TARGETED SOLUTIONS

Cellulite

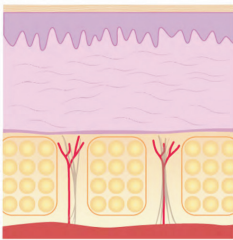


Facts and information

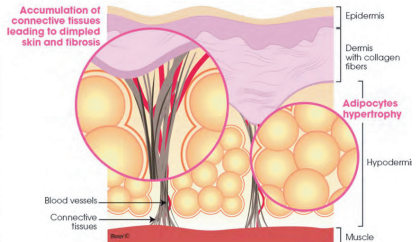
cellulite

Cellulite affects about 85% of the global female adult population. It is one of the most common skin related concerns and can have an impact on an individual's self-image and 'body confidence'. The term cellulite describes the small depressions and dimples that form predominantly on the legs, buttocks and sometimes the abdomen and is widely described as having an 'orange peel' like appearance. Cellulite usually starts forming shortly after puberty and is caused and exacerbated by a number of factors:

- Reduced dermal integrity
- Fibrosis
- Fat hypertrophy
- Fluid retention
- Toxin build up
- Metabolic issues
- Reduction in or loss of skin elasticity
- Hormonal impacts
- Poor circulation
- Weak connective tissue



Healthy skin



Skin affected by cellulite

what is skinade Targeted Solutions® Cellulite?

Skinade Targeted Solutions® Cellulite is a drinkable internal skin care product that delivers its functional ingredients through a highly absorbable liquid solution with micro solids in suspension. This delivery mechanism ensures optimal delivery format and efficacy. As the product works from the inside, it supports the skin all over your body (whether your cellulite is located on the legs, buttocks or abdomen).

It works from the inside to address: oxidative damage, hormonal changes, fibrosis, stress, water retention, poor detoxification and is designed to improve circulation, metabolism, skin elasticity and the integrity of the dermal matrix essential to reducing the appearance of cellulite.

Developed by leading UK scientists and manufactured in the UK, our patent - pending formulation contains key feedback mechanism ingredients, high-grade micronutrients and the special activated enzyme Superoxide Dismutase.

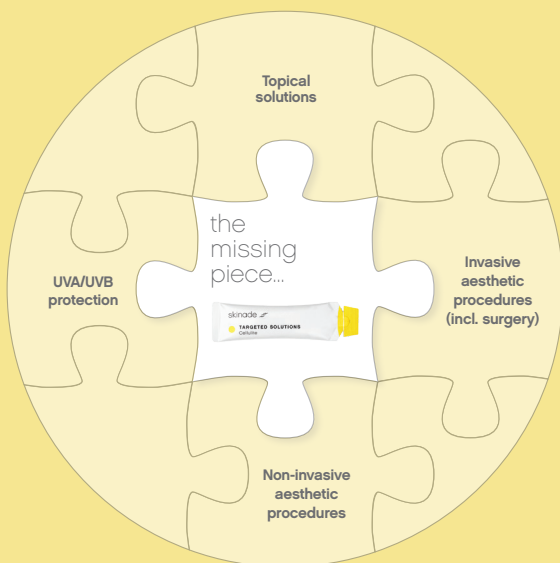
Skinade Targeted Solutions® Cellulite contains only the highest quality ingredients with no artificial flavours or colouring and fewer than 16 calories. Flavoured with natural orange and date juice with selected natural flavours, it offers a pleasant tasting, convenient and highly effective solution to addressing cellulite related concerns.

Drinking skinade Targeted Solutions® Cellulite on a daily basis results in firmer, smoother, more even looking skin with a reduction in the dimpling associated with the 'orange peel' like appearance attributed to cellulite.

smarter skincare

According to leading medical professionals, it is possible to reduce the appearance of cellulite by adopting a comprehensive approach.

Due to cellulite's many causes, addressing concerns topically in addition to working from the inside is essential.



how to take skinade Targeted Solutions[®] Cellulite

Skinade Targeted Solutions[®] Cellulite comes in two parts; a liquid sachet and a special powder activator sachet. Dilute one liquid sachet in a small glass of water, then add and mix the powder activator and drink immediately. Skinade Targeted Solutions[®] Cellulite can be used as needed. Whether 'getting ready for summer' or making it part of your targeted daily skincare regime.

We recommend starting with a 30-day supply.

how skinade Targeted Solutions[®] Cellulite works

Skinade Targeted Solutions[®] Cellulite works from the inside out to target specific issues associated with and leading to cellulite: oxidative damage, hormonal changes, fibrosis, stress, water retention and poor detoxification. It improves circulation, metabolism, skin elasticity and the integrity of the dermal matrix and septae to prevent fat hypertrophy. The enzyme Superoxide Dismutase and a highly refined type "i" dominant collagen peptide are specifically included to prevent collagen fibrosis, strengthen and repair the existing matrix.

the benefits

After completing a course of skinade Targeted Solutions[®] Cellulite, consumers have reported the following results in affected areas:

- **Firmer skin**
- **Smoother skin**
- **Reduced lumpiness and dimpling**
- **More even skin**
- **Increased skin elasticity**
- **Reduction in the appearance of 'orange peel'**

Individual results will vary but, with continued daily use, your skin will continue to clear and improve. Start with a 30-day supply. For best results, we recommend 90 days.

why a drink?

If you were to try to take all skinade Targeted Solutions[®] Cellulite ingredients in tablet form, you would need to swallow around thirty large tablets daily. Not only is this difficult, but the body would not be able to absorb the ingredients at the right speeds and levels that are essential for optimum efficacy of the product.

the ingredients

Collagen peptides

One of the major causes of cellulite is the breakdown and interruption of the dermal matrix leading to uneven and weakened dermal tissue, resulting in bulging of subcutaneous fat. Skinade Targeted Solutions® Cellulite utilises a highly refined type 'I' dominant collagen peptide to specifically trigger correct connective collagen formation. This mechanism works on two levels, replacing lost collagen and rebuilding the existing matrix.

Methylsulfonylmethane (MSM)

MSM is used in elastin formation and prevents collagen fibres cross linking. It is a powerful anti-inflammatory and regulates osmotic flow making it a powerful detox agent.

Holy Basil Extract

Powerful natural adaptogen. It maintains blood glucose levels, supports adrenal function, reduces appetite, sugar cravings and stress (negative impact from hormone cortisol) all key issues that lead to and exacerbate cellulite.

Dandelion Root Extract

Helps to reduce water retention and detoxifies the liver from excess toxins and hormones.

Horse Chestnut Extract

Swollen and heavy legs and capillary fragility are widespread symptoms of cellulite. Horse chestnut reactivates circulation, reducing swelling and minimising water retention.

N-Acetyl-L-Cysteine

Helps to replenish intracellular glutathione, a vital cellular antioxidant that minimizes lipid peroxidation of cell membranes. Increases activity of the NOS enzyme to boost Nitric Oxide (NO) levels in the body increasing blood flow to muscles and increasing metabolic rate.



N - Acetyl - L - Carnitine

Plays a critical role in metabolism and energy production. Transports long-chain fatty acids into the cells mitochondria to produce energy. It also transports toxins and prevents their accumulation. Toxin build up is a major contributor to cellulite.

Organic Seagreens Ascophyllum Kelp

Reduces water retention. Counteracts stagnation. Stimulates the metabolism and promotes weight loss via lipolysis (process of fat breakdown). Rich in unsaturated fats and has anti-inflammatory and firming properties.

Superoxide Dismutase

Highly bioactive format naturally sourced from melons. Clinically proven to reduce visible cellulite by boosting endogenous antioxidant defence mechanisms reducing hypertrophy of fat cells and reducing corruption of connective tissues associated with oxidative stress. We include a therapeutic dose of 80mg visibly lowering fat nodes.



Vitamin A - Retinol Acetate

Encourages normal skin cell renewal, stimulates fibroblasts for increased collagen production and increased elasticity.

Bromelain

Prevents and actively lowers fluid retention and improves digestive function. Has a powerful anti-inflammatory effect.

Vitamin E - D - Alpha Tocopheryl Succinate

Works with vitamin C as a major antioxidant and free radical scavenger.

Milk Thistle Extract

Toxin build up is a root cause of cellulite. Milk Thistle is a powerful detox and liver support compound. Reduces inflammation.

Copper Bisglycinate

Involved in collagen synthesis (with zinc and vitamin C), strengthening dermal integrity and increasing skin elasticity. Copper is also a cofactor in the production of Superoxide Dismutase.

Vitamin B1 - Thiamine

Reduces the size of fat cells. Essential for liver detoxification.

Zinc Gluconate

Important cofactor for the enzyme Superoxide Dismutase.

Vitamin B3 - Niacinamide

Improves microcirculation of the skin. Poor blood flow is a major cause of cellulite formation due to associated stagnation, fluid retention and poor detoxification. This in turn results in low nutrient delivery and a negative cycle that through continuous increase of adipocytes lowers blood flow even further.

Vitamin C - Calcium Ascorbate

An essential component to new collagen formation and fibroblast response to peptide feedback mechanism.

Red Clover Extract

Imbalances in oestrogen lead to increased water retention and reduced collagen and elastin. Red clover balances hormone levels.

NUTRITIONAL INFORMATION

nutritional information

Skinade Targeted Solutions® Cellulite is manufactured in the UK and naturally only contains EU - approved ingredients:

Nutritional information	Per 15ml	RI	%RI
Energy (kcal)	15.3	2000	0.77
Protein (g)	0.268	58.5	0.46
Carbohydrates (g)	3.6	130	2.77
of which sugar (g)	3.194	25	12.78
Fat (g)	0.056	44	0.13
Fibre (g)	0.068	24	0.28
Sodium (g)	0.0042	2	0.21

Liquid Sachet	mg Per 15ml	NRV (mg)	%NRV
Collagen	2500	*	*
Methylsulfonylmethane	1000	*	*
Holy Basil Extract	575	*	*
N-Acetyl-L-Cysteine	500	*	*
Vitamin C – Calcium Ascorbate	500	80	625
Dandelion Root Extract	400	*	*
Horse Chestnut 20% Aescin	300	*	*
Organic Seagreens Ascophyllum Kelp	286	*	*
N-Acetyl-L-Carnitine	250	*	*
Red Clover Extract	250	*	*
Thiamine – B1	25	1.1	2273
Zinc Gluconate	20	10	200
Niacinamide – B3	20	16	125
Vitamin A – Retinol Acetate	4.61	2664 (iu)	56.5
Copper Bisglycinate	2	1	200

Powder Sachet	Per 1.1g	NRV (mg)	%NRV
Milk Thistle Extract 80%	650	*	*
Vitamin E – D-Alpha Tocopheryl Succinate	231	17.9 (iu)	1921
Bromelain 100 gdu/g	125	*	*
Superoxide Dismutase	80	*	*

RI = Reference Intake

DV= Daily Value

* = No established DV

NRV = Nutrient Reference Value

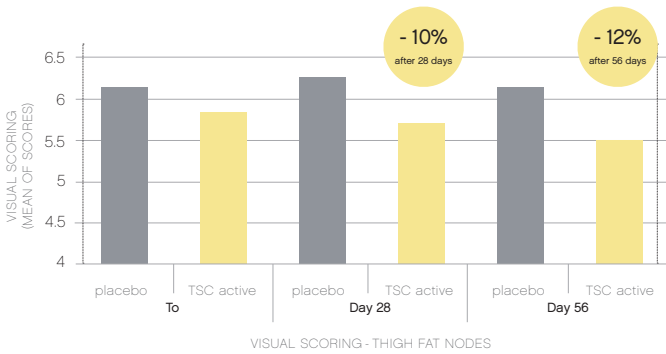
* = No established NRV

clinical results

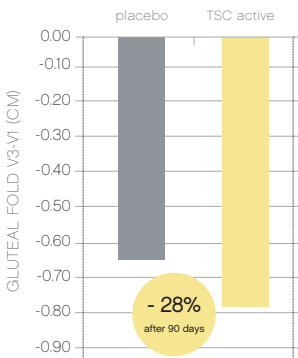
significantly reduces visible cellulite*

Significant result observed on:

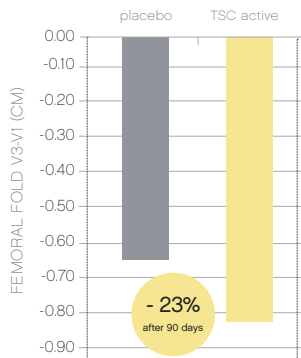
- 87% of women at Day 28
- 100% of women at Day 56



significantly reduces subcutaneous fat**



Gluteal fold progression for an average weight loss of 4kg



Femoral fold progression for an average weight loss of 4kg

* Lemaire B. & al, Phytothérapie 2015, 14/23-28

** TSC active, second clinical trial

proven results

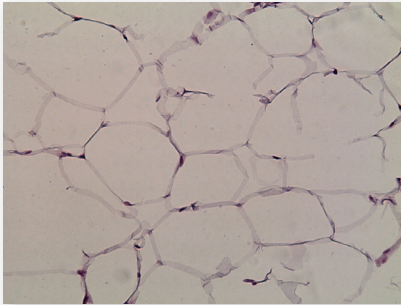
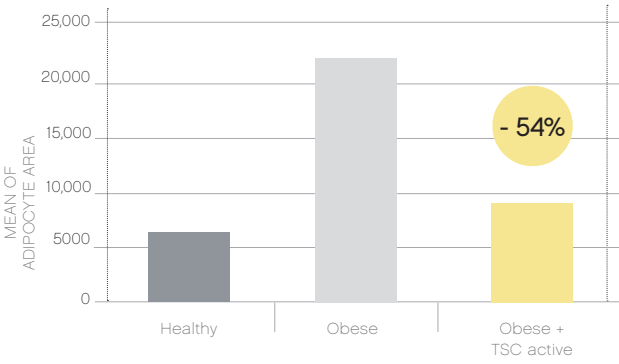
**“Skinade continues to innovate
and lead the field with this new
range of products”**

Mr Paul Banwell

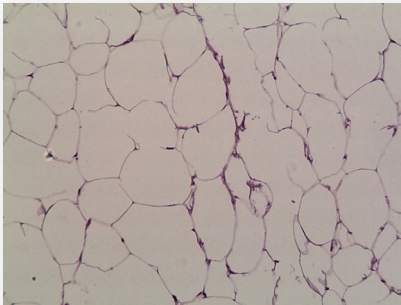
Cosmetic Plastic & Cosmetic surgeon

PROVEN RESULTS

fat cells size reduction



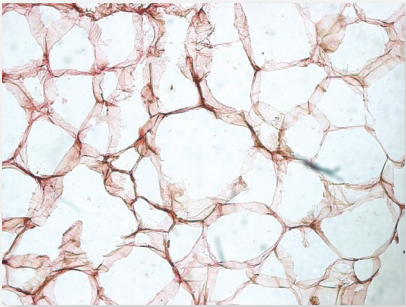
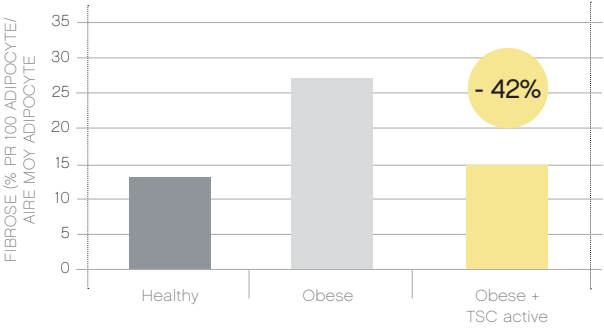
Obese



Obese + TSC active

PROVEN RESULTS

Fibrosis resorption



Obese



Obese + TSC active

Carillon J, et al, Mol. Nutr. Food Res. 58:842 - 850, 2014

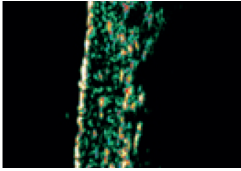


skinade 

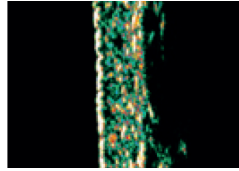
TARGETED SOLUTIONS
Cellulite

PROVEN RESULTS

Density of dermis (ultrasound measurement)



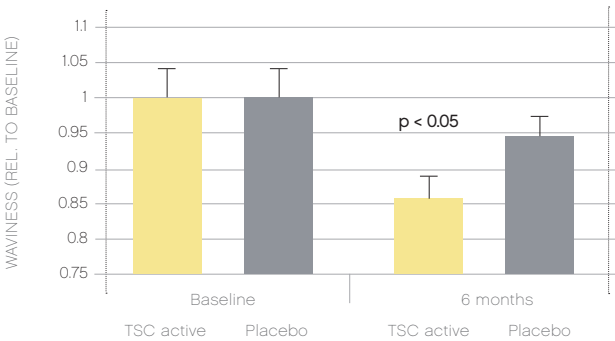
Placebo (6 months)



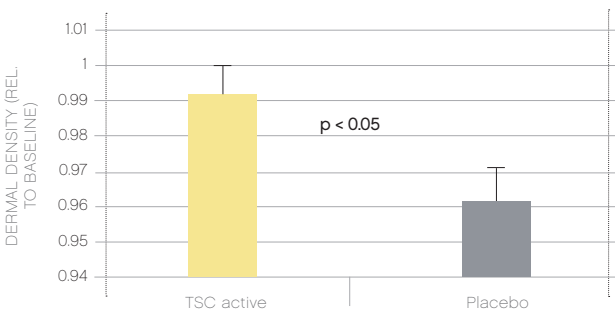
TSC active (6 months)

Colours represent the intensity strength of the acoustic response from the skin, this skin density.

significant decrease of waviness



significant higher dermal density after 6 months

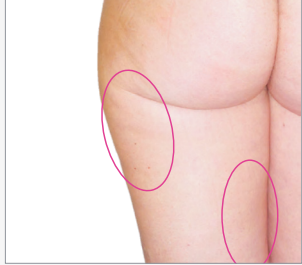


Journal of Medicinal Food, J Med Food 00 (0) 2015, 1–9, DOI: 10.1089/jmf.2015.022, Dietary Supplementation with Specific Collagen Peptides Has a Body Mass Index-Dependent Beneficial Effect on Cellulite Morphology. Michael Schunck, 1 Vivian Zague, 2 Steffen Oesser, 1 Ehrhardt Proksch, 3

proven results



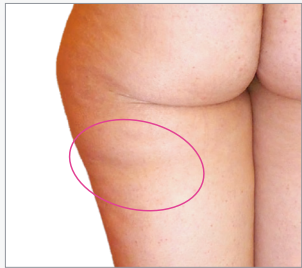
before



after



before



after



before



after

* TSC active trials

skinade.com